



Computer generated
image depicts the front
elevation of The Stour.

PROPERTY TYPE

The Stour



BEDROOMS x 1



LIVING/DINING



BATHROOMS x 2

The generously proportioned 95.5 sq m (1022 sq ft) of living space make The Stour a spacious delight. The open plan kitchen, living and dining room provides views across the landscaped gardens at Burnham Waters. Our signature full height window to the living room adds natural light to the spacious living area to further enhance wellbeing.

PLOT LOCATIONS

8

13

20

27

45

49

60

67

69

71

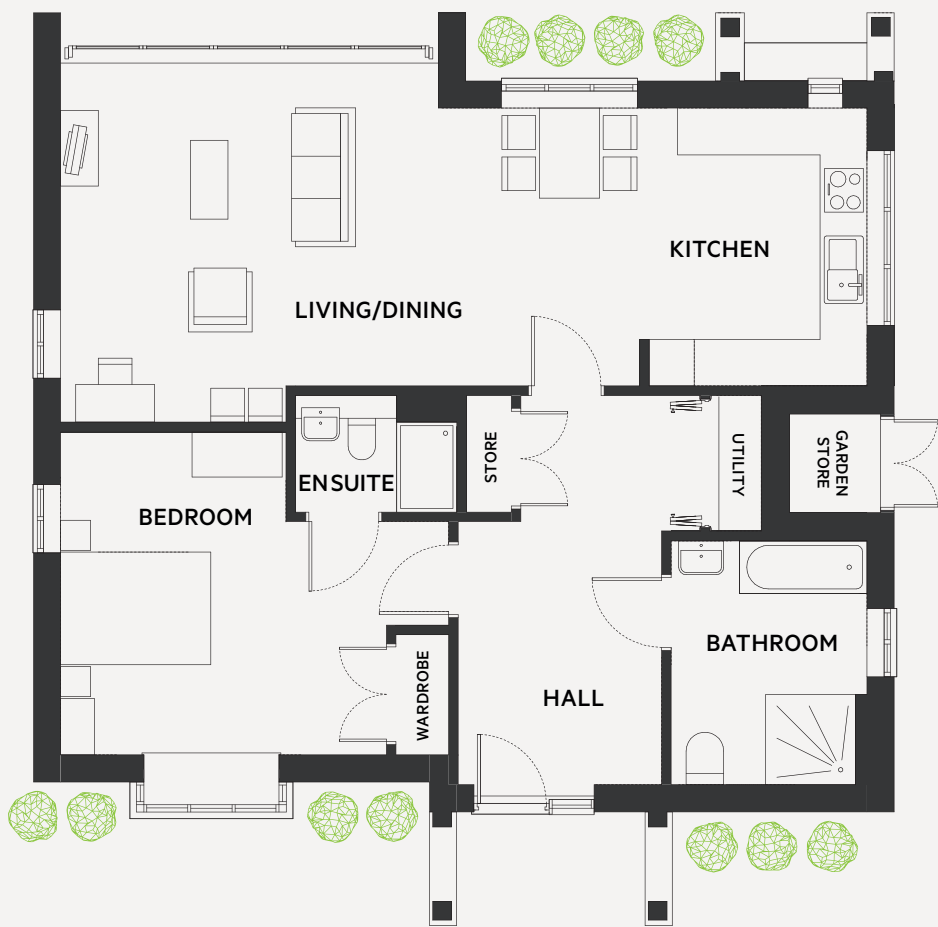
82

89

96

99

Plan & dimensions



DIMENSIONS

| AREA | METRIC | IMPERIAL |
|-----------------|-------------|-----------------|
| Living / Dining | 7.70 x 4.90 | 25' 3" x 16' 0" |
| Kitchen | 3.00 x 3.70 | 9' 8" x 12' 2" |
| Bedroom | 4.30 x 4.30 | 14' 1" x 14' 1" |
| Bathroom | 2.60 x 3.20 | 8' 6" x 10' 6" |
| <hr/> | | |
| Total | 95.5 sqm | 1022 sq ft |



Computer generated image depicts the rear elevation of The Stour.



For further information on this property or any others on the Burnham Waters development, please call the agent on 01621 861 559.

Every care has been taken in the preparation of this brochure. The details contained therein are for guidance only and should not be relied upon as exactly describing any of the particular material illustrated or written by any order under the Consumer Protection from Unfair Trading Regulations 2008. This information does not constitute a contract, part of a contract or a warranty. Burnham Waters Ltd operates a programme of continuous product development. All computer generated images are indicative and may be subject to change. All internal imagery depicts previous group developments, specification may vary from that shown. All time and distances quoted are approximate and taken from either google.co.uk or nationalrail.co.uk. August 2022