



PROPERTY TYPE

The Colne



BEDROOMS x 1



LIVING/DINING



BATHROOMS x 2

Light and spacious accommodation with 88 sq m (947 sq ft) of thoughtfully planned living space.

This property benefits from a living/dining area featuring a floor to ceiling picture window, beautifully proportioned bedroom with en suite and well appointed bathroom.

PLOT LOCATIONS

15 25 32 38 39 44

FEATURES

Step-free access

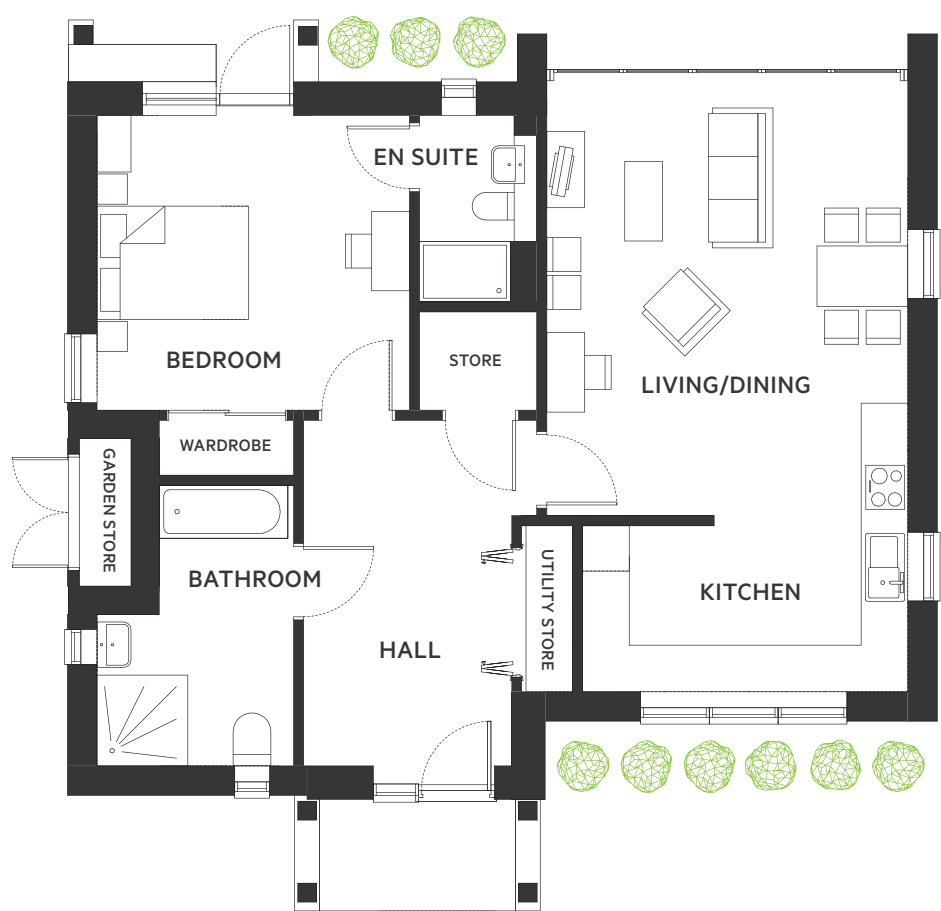
Private garden & parking

EV charging

Vaulted lounge

24/7 security

Plan & Dimensions



DIMENSIONS

AREA	METRIC	IMPERIAL
Living / Dining	5.90 x 4.80	19' 4" x 15' 9"
Kitchen	2.20 x 4.10	7' 2" x 13' 6"
Bedroom	3.90 x 4.10	12' 10" x 13' 5"
Bathroom	2.60 x 3.70	8' 6" x 12' 2"
<hr/>		
Total	88 sq m	947 sq ft



Computer generated image depicts the rear elevation of The Colne.

For further information on this property or any others on the Burnham Waters development, please call the agent on 01621 861 559.

Every care has been taken in the preparation of this brochure. The details contained therein are for guidance only and should not be relied upon as exactly describing any of the particular material illustrated or written by any order under the Consumer Protection from Unfair Trading Regulations 2008. This information does not constitute a contract, part of a contract or a warranty. Burnham Waters Ltd operates a programme of continuous product development. All computer generated images are indicative and may be subject to change. All internal imagery depicts previous group developments, specification may vary from that shown. All time and distances quoted are approximate and taken from either google.co.uk or nationalrail.co.uk. May 2025