



Computer generated image depicts the front elevation of The Lea.

PROPERTY TYPE

The Lea

 BEDROOMS x1
  LIVING/DINING
  BATHROOMS x 2

With a generously proportioned 95.5 sq m (1,022 sq ft) of living space, The Lea offers a superb blend of comfort and functionality. The open plan kitchen, living, and dining area enjoys picturesque views over the landscaped gardens at Burnham Waters, while the full-height feature window fills the living space with uplifting natural light.

A standout addition is the oversized store room — complete with its own window — providing a bright and adaptable space ideal for a home office, library, or grandchildren’s bedroom.

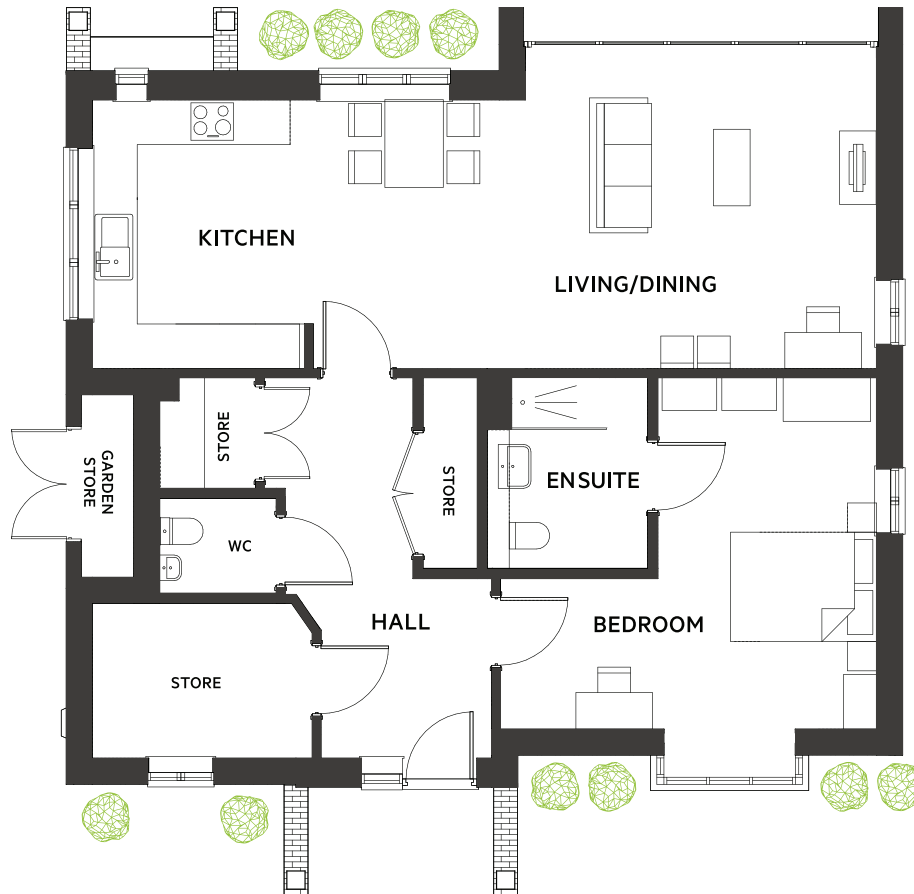
PLOT LOCATIONS

8	45	49	58	60	67
69	71	82	89	96	99

FEATURES

- Step-free access
- Private garden & parking
- EV charging
- Vaulted lounge
- 24-hour on-site warden

Plan & Dimensions



DIMENSIONS

AREA	METRIC	IMPERIAL
Living / Dining	7.60 x 4.30	24' 11" x 14' 1"
Kitchen	3.00 x 3.60	9' 8" x 11' 10"
Bedroom	5.10 x 4.60	16' 9" x 15' 1"
En Suite	2.10 x 2.50	6' 11" x 8' 2"
Store Room	2.90 x 2.10	9' 6" x 6' 11"

Total	95.5 sq m	1022 sq ft
--------------	------------------	-------------------



Computer generated image depicts the rear elevation of The Lea.

For further information on this property or any others on the Burnham Waters development, please call the agent on **01621 861 559**.

Every care has been taken in the preparation of this brochure. The details contained therein are for guidance only and should not be relied upon as exactly describing any of the particular material illustrated or written by any order under the Consumer Protection from Unfair Trading Regulations 2008. This information does not constitute a contract, part of a contract or a warranty. Burnham Waters Ltd operates a programme of continuous product development. All computer generated images are indicative and may be subject to change. All internal imagery depicts previous group developments, specification may vary from that shown. All time and distances quoted are approximate and taken from either google.co.uk or nationalrail.co.uk. March 2026