



Computer generated image depicts the front elevation of The Crouch

PROPERTY TYPE

The Crouch

 BEDROOMS x 2
  LIVING/DINING
  BATHROOMS x 2

Our generously proportioned 120 sq m (1292 sq ft) two-bedroom property.

A welcoming hallway with ample storage leads to the open plan living and dining room which benefits from a feature floor to ceiling window filling the space with daylight. The primary bedroom offers easy direct access to the patio area and en suite bathroom for convenience.

This property is further enhanced by a large luxurious bathroom and spacious second bedroom with a feature bay window.

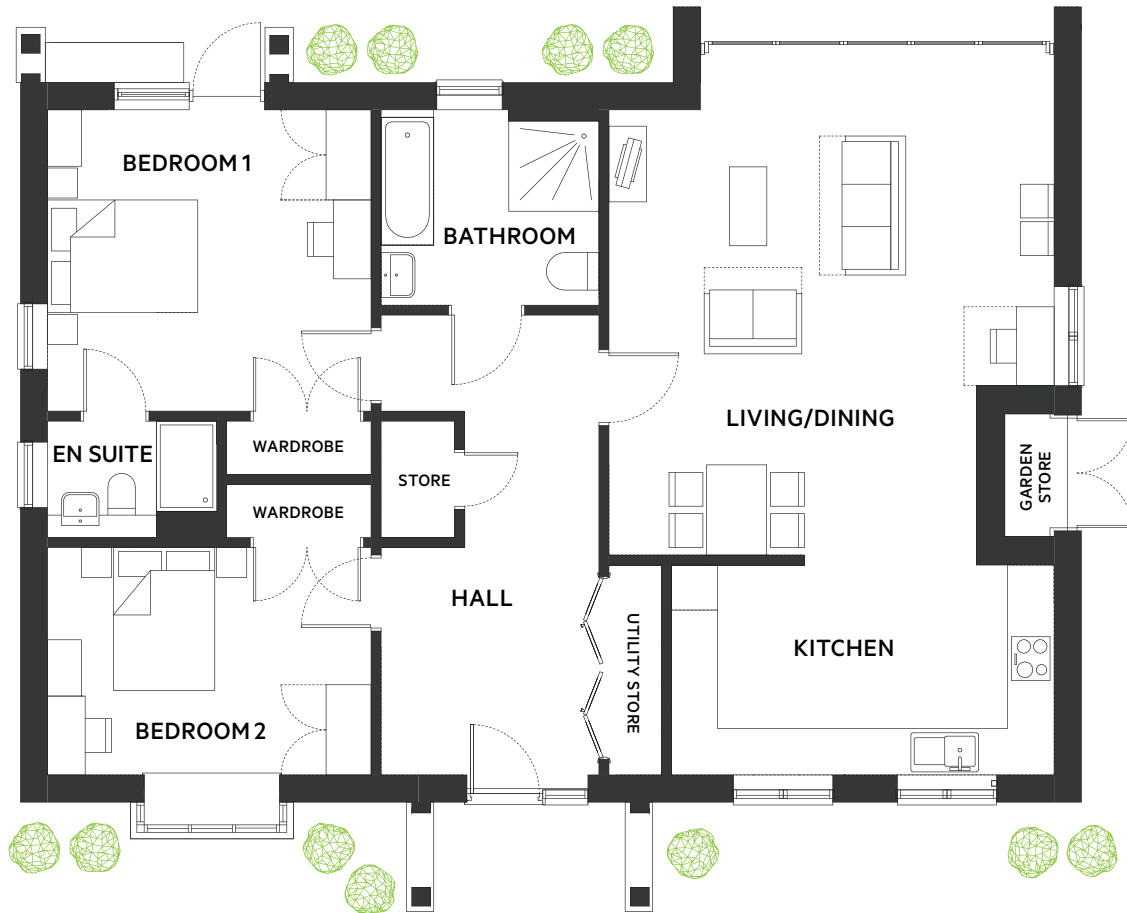
PLOT LOCATIONS

14	22	23	29	30	35
36	41	47	52	56	57
61	63	66	70	73	77
78	88	90	95	97	100

FEATURES

- Step-free access
- Private garden & parking
- EV charging
- Vaulted lounge
- 24-hour on-site warden

Plan & Dimensions



DIMENSIONS

AREA	METRIC	IMPERIAL
Living / Dining	6.80 x 5.95	22' 3" x 19' 5"
Kitchen	2.80 x 5.00	9' 2" x 16' 4"
Bedroom 1	4.00 x 4.30	13' 1" x 14' 1"
En Suite	1.25 x 2.35	4' 1" x 7' 8"
Bedroom 2	3.00 x 4.30	9' 8" x 14' 1"
Bathroom	2.60 x 2.90	8' 5" x 9' 5"

Total	120 sq m	1292 sq ft
--------------	-----------------	-------------------



Computer generated image depicts the rear elevation of The Crouch.

For further information on this property or any others on the Burnham Waters development, please call the agent on **01621 861 559**.

Every care has been taken in the preparation of this brochure. The details contained therein are for guidance only and should not be relied upon as exactly describing any of the particular material illustrated or written by any order under the Consumer Protection from Unfair Trading Regulations 2008. This information does not constitute a contract, part of a contract or a warranty. Burnham Waters Ltd operates a programme of continuous product development. All computer generated images are indicative and may be subject to change. All internal imagery depicts previous group developments, specification may vary from that shown. All time and distances quoted are approximate and taken from either google.co.uk or nationalrail.co.uk. March 2026