



Computer generated image depicts the front elevation of The Blackwater

PROPERTY TYPE

The Blackwater



BEDROOMS x 3



LIVING/DINING



BATHROOMS x 2

PLOT LOCATIONS

1	4	12	16	17	19
28	33	37	40	43	46
51	65	68	72	74	84
86	101	102			

FEATURES

Step-free access

Private garden & parking

EV charging

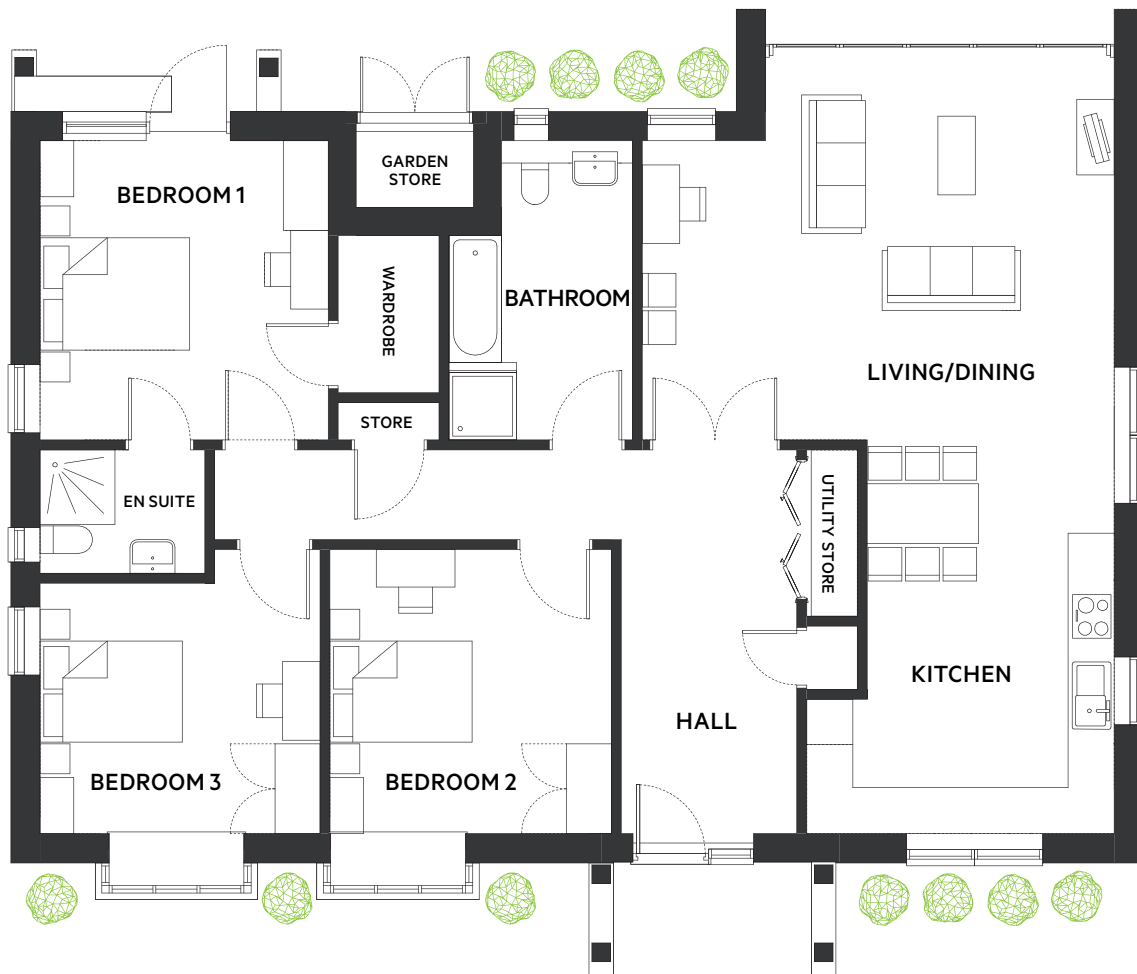
Vaulted lounge

24-hour on-site warden

Our largest property on the development, spanning a generous 137 sq m (1475 sq ft) incorporates a light and airy living space featuring our signature floor to ceiling picture window and three large bedrooms. The primary bedroom benefits from an en suite and walk-in wardrobe.

The home's layout has been carefully considered to enhance space and light throughout the home with the highest attention to detail evident in every room.

Plan & Dimensions



DIMENSIONS

AREA	METRIC	IMPERIAL
Living / Dining	6.35 x 5.25	20' 8" x 17' 2"
Kitchen	5.30 x 4.10	17' 4" x 13' 1"
Bedroom 1	3.90 x 4.00	12' 10" x 13' 1"
En Suite	2.30 x 1.65	7' 6" x 5' 6"
Bedroom 2	3.80 x 3.80	12' 5" x 12' 5"
Bedroom 3	3.80 x 3.80	12' 5" x 12' 5"
Bathroom	2.50 x 4.00	8' 2" x 13' 1"

Total	137 sq m	1475 sq ft
--------------	-----------------	-------------------



Computer generated image depicts the rear elevation of The Blackwater.

For further information on this property or any others on the Burnham Waters development, please call the agent on **01621 861 559**.

Every care has been taken in the preparation of this brochure. The details contained therein are for guidance only and should not be relied upon as exactly describing any of the particular material illustrated or written by any order under the Consumer Protection from Unfair Trading Regulations 2008. This information does not constitute a contract, part of a contract or a warranty. Burnham Waters Ltd operates a programme of continuous product development. All computer generated images are indicative and may be subject to change. All internal imagery depicts previous group developments, specification may vary from that shown. All time and distances quoted are approximate and taken from either google.co.uk or nationalrail.co.uk. March 2026